

# WELCOME

Train the Trainers - GE

Peer mentoring



*ASSET Project number 585587-EPP-1-2017-1-IL-EPPKA2-CBHE-JP*



# ASSET

Assessment Tools for HE learning environments  
2017-2020



Erasmus+ Capacity Building in the Field  
of Higher Education



Co-funded by the  
Erasmus+ Programme  
of the European Union



# Introduction to ASSET

## Train the Trainers - GE

May 13-16, 2019

- **Assessment Tools** for new learning environments in higher education institutions
- *ASSET Project number 585587-EPP-1-2017-1-IL-EPPKA2-CBHE-JP*



Introduction

# ASSET consortium

 <b>Kinneret Academic College K.C.J.V.</b> Dorit Alt <a href="mailto:dorita@kinneret.ac.il">dorita@kinneret.ac.il</a> Professional website <a href="http://www.dorit-alt.com">www.dorit-alt.com</a>	 <b>Sokhumi State University SSU</b> Lia Ahladze <a href="mailto:liaahladze@yahoo.com">liaahladze@yahoo.com</a> Tamuna Shingashvili <a href="mailto:tamuna205@protonmail.com">tamuna205@protonmail.com</a>
 <b>Hadassah Academic College HAC</b> Ankita Gordon-Shaag <a href="mailto:ankita@hadassah.ac.il">ankita@hadassah.ac.il</a>	 <b>Ili State University ISU</b> Eka Mikautadze <a href="mailto:Ekaterine.mikautadze.10@ihsuntel.ge">Ekaterine.mikautadze.10@ihsuntel.ge</a> Ketevan Darakhvelidze <a href="mailto:ketevan.darakhvelidze@ihsuntel.edu.ge">ketevan.darakhvelidze@ihsuntel.edu.ge</a>
 <b>Gordon Academic College GACE</b> Rhonda Sofer <a href="mailto:rhonda@gordon.college">rhonda@gordon.college</a>	 <b>Ivane Javakhiashvili Tbilisi State University TSU</b> Isabella Petrishvili <a href="mailto:isabella.petrishvili@gmail.com">isabella.petrishvili@gmail.com</a>
 <b>The College of Sakrebulo for Teacher Education</b> Yasser Awad <a href="mailto:awad_y@netvision.net.il">awad_y@netvision.net.il</a>	 <b>Samtskhe-Javakheti State University SJSU</b> Tina Gelashvili <a href="mailto:tinikogel@gmail.com">tinikogel@gmail.com</a>
 <b>VARAM</b> Rust Bargini <a href="mailto:varam.org@gmail.com">varam.org@gmail.com</a>	 <b>National Center for Teacher Professional Development NCTPD</b> Ekaterine Mamashashvili <a href="mailto:emamashashvili@tpdc.ge">emamashashvili@tpdc.ge</a>
 <b>OTTO-FRIEDRICH-UNIVERSITAET BAMBERG, Germany OFUB</b> Karin Heinrichs <a href="mailto:karin.heinrichs@uni-bamberg.de">karin.heinrichs@uni-bamberg.de</a>	 <b>School of Digital Technologies, Tallinn University, Estonia TU</b> Sirje Virkus <a href="mailto:svirje@tlu.ee">svirje@tlu.ee</a>
 <b>Private University of Education of the Diocese of Linz, Austria PHIDL</b> Alfred Weinberger <a href="mailto:alfred.weinberger@ph-linz.at">alfred.weinberger@ph-linz.at</a>	 <b>University College of Cork, Ireland UCC</b> Marian McCarthy <a href="mailto:mmccarthy@ucc.ie">mmccarthy@ucc.ie</a> Laura Lee <a href="mailto:L.Lee@ucc.ie">L.Lee@ucc.ie</a>



- ASSET focuses on the assessment aspect of “learning-teaching-assessment” triangle to enhance education and to align assessment with learning outcomes.



Summative  
assessment



The goal is to *evaluate student learning at the end of an instructional unit* by comparing it against some standard or benchmark.



Formative  
assessment



The goal is to *monitor student learning to provide ongoing feedback* that can be used by instructors to improve their **teaching** and by students to improve their **learning**.

Assessment ~~OF~~ **FOR Learning & teaching**







# OUR TEAM – Open Digital Badges



**SIRJE VIRKUS**

TALLINN  
UNIVERSITY

[sirvir@tlu.ee](mailto:sirvir@tlu.ee)



**AIRA LEPIK**

TALLINN  
UNIVERSITY

[aira@tlu.ee](mailto:aira@tlu.ee)



**MOYA REVINS**

UNIVERSITY COLLEGE  
CORK

[moya.revins@ucc.ie](mailto:moya.revins@ucc.ie)



**LIORA NUTOV**

GORDON ACADEMIC  
COLLEGE OF EDUCATION

[lioranutov@gmail.com](mailto:lioranutov@gmail.com)



**IZABELA  
PETRIASHVILI**

IVANE JAVAKHISHVILI TBILISI  
STATE UNIVERSITY

[izabela.petriashvili@tsu.ge](mailto:izabela.petriashvili@tsu.ge)



**LIA  
AKHALADZE**

SOKHUMI STATE  
UNIVERSITY

[liaahaladze@sou.edu.ge](mailto:liaahaladze@sou.edu.ge)



**IRINA  
SAMSONIA**

ILIA STATE  
UNIVERSITY

[isamsonia@gmail.com](mailto:isamsonia@gmail.com)



**DIANA  
MIKELADZE**

SAMTSKHE-JAVAKHETI  
STATE UNIVERSITY

[dk.mikeladze@gmail.com](mailto:dk.mikeladze@gmail.com)



**LEVAN  
KVARATSKHELIA**

SOKHUMI STATE  
UNIVERSITY

[L.kvaratskhelia92@gmail.com](mailto:L.kvaratskhelia92@gmail.com)



**WHY  
BADGES?**

**WHAT ARE  
BADGES?**

**BADGE  
RESEARCH**

**OPEN  
BADGES**

**BADGE  
PLATFORMS**

**GETTING  
STARTED**

**BADGE  
EXAMPLES**

**F. A. Q.**



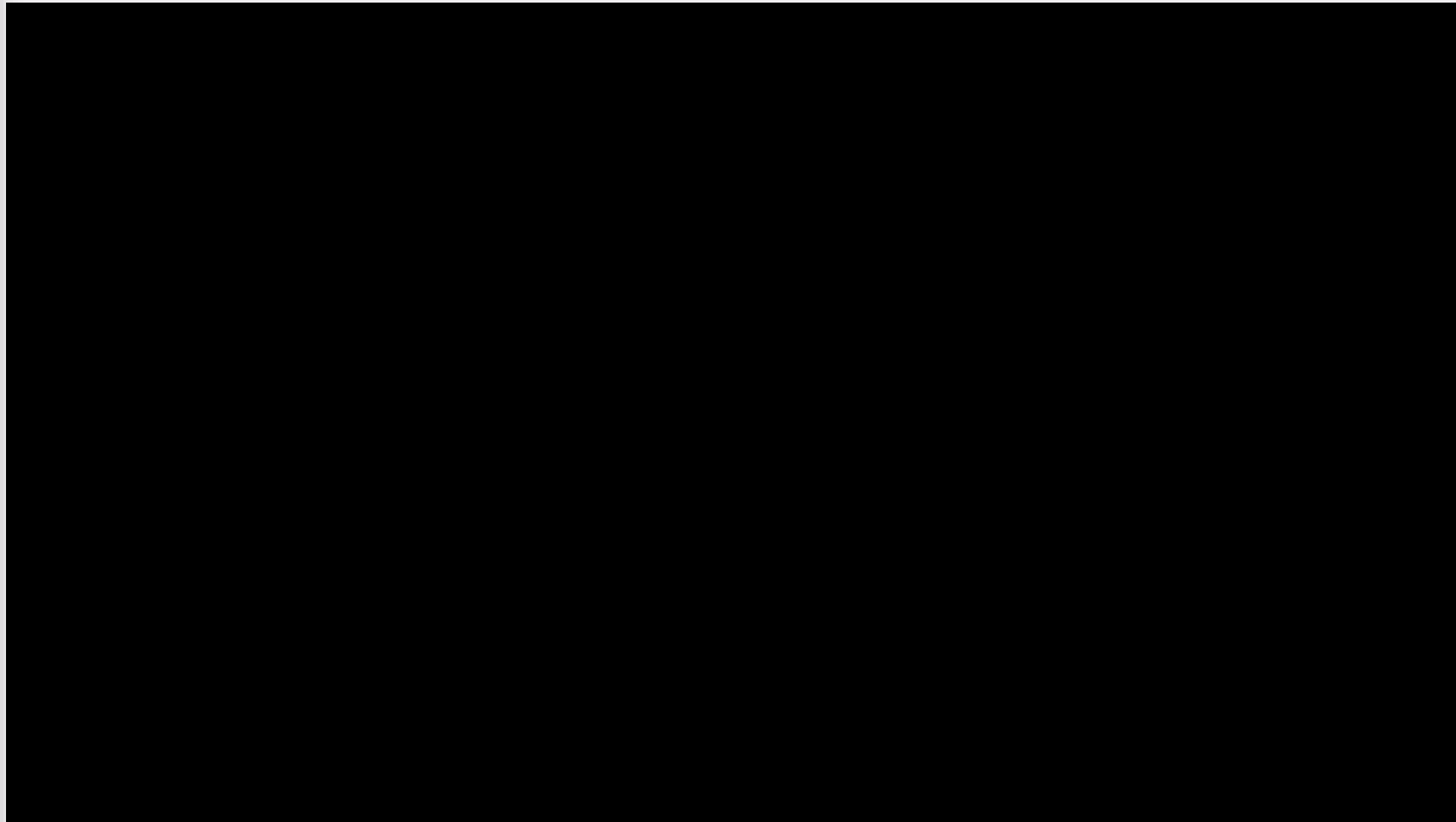
**Theoretical Part**

**Introduction**



# What is a Badge?

<https://www.youtube.com/watch?v=RDmfE0noOJ8&feature=youtu.be>



Theoretical Part

Introduction

# What are Open Badges (OB)?

- Open Badges or Digital Badges are visual symbols that provide a validated indicator of achievements and communicate skills and knowledge packed with data and evidence that can be shared across the web.
- Open badges empower individuals to take their learning with them, wherever they go, building a rich picture of their lifelong learning journey (<https://openbadges.org/>).

უნარები



TALLINN UNIVERSITY



Theoretical Part

Introduction

# What's an Open Badge?

Open Badges are verifiable, portable digital badges with embedded metadata about skills and achievements. They comply with the Open Badges Specification and are shareable across the web.

Each Open Badge is associated with an image and information about the badge, its recipient, the issuer, and any supporting evidence. All this information may be packaged within a badge image file that can be displayed via online CVs and social networks. Thousands of organizations across the world issue badges in accordance with the Open Badges Specification, from non-profits to major employers to educational institutions at all levels.

**Badges may represent many different types of achievements and claims:**



  
**Theoretical Part**

**Introduction**

**Summery/Feedback**

**Group Presentations**

**Hands - on**

**Case Study - SSU**

# Open Badge Anatomy

## Metadata

Open Badges



**THERE'S  
DATA INSIDE!**

- Badge name
- Badge URL (description)
- Badge criteria
- Badge image
- Issuer
- Issue date
- Recipient
- Tags
- Alignment (standards)
- Expiration date
- Evidence URL

@bryanMMathers



Theoretical Part

Introduction

Summary/Feedback

Group Presentations

Hands - on

Case Study - SSU

# Badge Specifications



Theoretical Part

Introduction

Summary/Feedback

Group Presentations

Hands - on

Case Study - SSU

# Badge Opportunities



@bryanMMathers

Theoretical Part

Introduction

Summary/Feedback

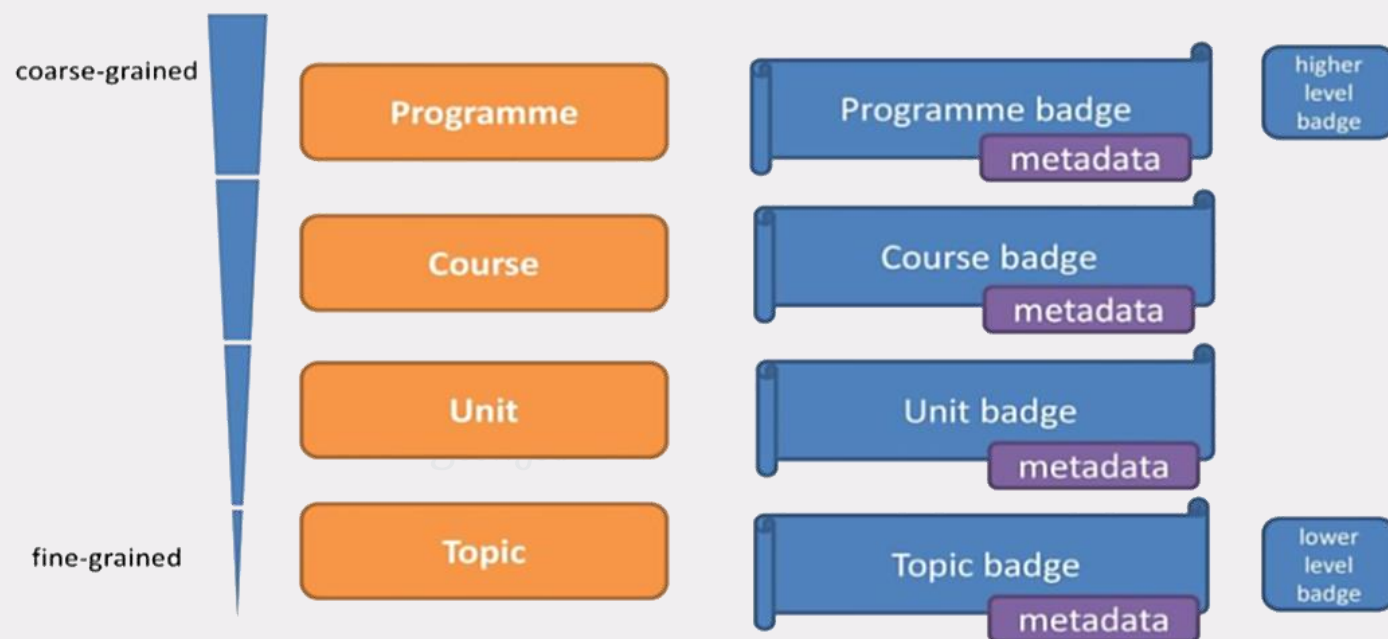
Group Presentations

Hands - on

Case Study - SSU



# Granularity and Awarding Digital Badges



Theoretical Part

Introduction

Summary/Feedback

Group Presentations

Hands - on

Case Study - SSU

# Types of Open Badges

There are many types of Open Badges:

- Outcome-Based Badges
  - Basic Knowledge badges
  - Skills badges
  - Advanced Knowledge badges
- Multiple level of badges (e.g. regular badges, golden badges; Gold, Silver, Bronze)
- Multiple Learning Pathways (Researcher, Practitioner, Wikipedist)
- Broken badges: are used to point out unwanted behaviour (e.g. being late with the assignments).
- Deconstructed badges: large learning activities should be deconstructed into separate independent badges (e.g. peer review badge for the literature review assignment).



## Learner's Perspective on OB

- Support learners with different learning styles (e.g. Activist; Reflector; Theorist; Pragmatist (by Honey & Mumford, 1992));
- Help learners to plan their learning goals and strategies (learning contract);
- Learners can choose their own learning paths:
  - Some learners can create learning objects,
  - Some write a literature review on an essay,
  - Some can develop podcasts or videos, etc.
- Could be used for self-assessment.

**Open Badges, multiple learning pathways and personal learning contracts form a triangle of educational tools that complement each other when used together.**



# Get Started

## Earn Open Badges

By earning Open Badges you can organize and share your skills across the web in a dynamic portable way, to unlock opportunities in life and work.

### Issue

Over 3,000 organizations already issue Open Badges to nurture talent, build capability and recognize achievement, providing direct connections between earners and issuers.

### Display

When an Open Badge is shared the data held within the badge image is displayed. This data rich evidence can be shared across the web, telling the full story of an individual's achievements. უნარები

## Understand badge awards

Organizations use Open Badges to provide agile recognition of skills they value, to inform decisions around recruitment, retention and progression.

### Design

Organizations communicate and capture skills that matter to them, through the design of their Open badges. Well designed badges can add value to existing programs and deepen engagement with organizations.



Theoretical Part

Introduction

Summary/Feedback

Group Presentations

Hands - on

Case Study - SSU

# Open Badge Tools:

- **Open Badge Design Tools:**  
Openbadges.me <https://www.openbadges.me/> ;  
Moodle Badges <http://moodlebadges.com> ;  
Badgr <https://badgr.com> ;  
Google Drawing <https://quickdraw.withgoogle.com>
- **Open Badge Issuing Tools:**  
Openbadges.me <https://www.openbadges.me/> ;  
Moodle
- **Open Badge Storing Tools:**  
Mozilla Backpack  
<https://backpack.openbadges.org/backpack/welcome> ;  
Moodle
- **Open Badge Display Tools:**  
wikis, social media, e-portfolios, webpage, etc.
- **List of platforms issuing ODB:**  
<https://www.imsglobal.org/cc/statuschart/openbadges>
- **ODB 90 x 90 pixel, PNG format max 256 KB**



# Sokhumi State University – Case Study

## Open Digital Badges of Sokhumi State University:

Openbadges.me --- <https://www.openbadges.me/>  
Google drawings --- <https://docs.google.com/drawings/>



Case Study - SSU

Theoretical Part

Introduction



# Sokhumi State University – Case Study

## 1-ST PILOT

Faculty – Education

Subject – Multicultural Education: Multicultural and Multiethnic Georgia

Students number – 45

Time Interval – 17.09.2018 – 28.02.2019

- ☐ The majority of students are ethnically Georgian and Orthodox. However, there are ethnic minorities. For example: Azerbaijanis, half Ukrainians. There are also representatives of various religious minorities: the representatives of Islam, Jehovah's Witnesses, the half-Jews.
- ☐ Reading material for this subject was created in the framework of the Tempus project “DOIT” and then published as a book.

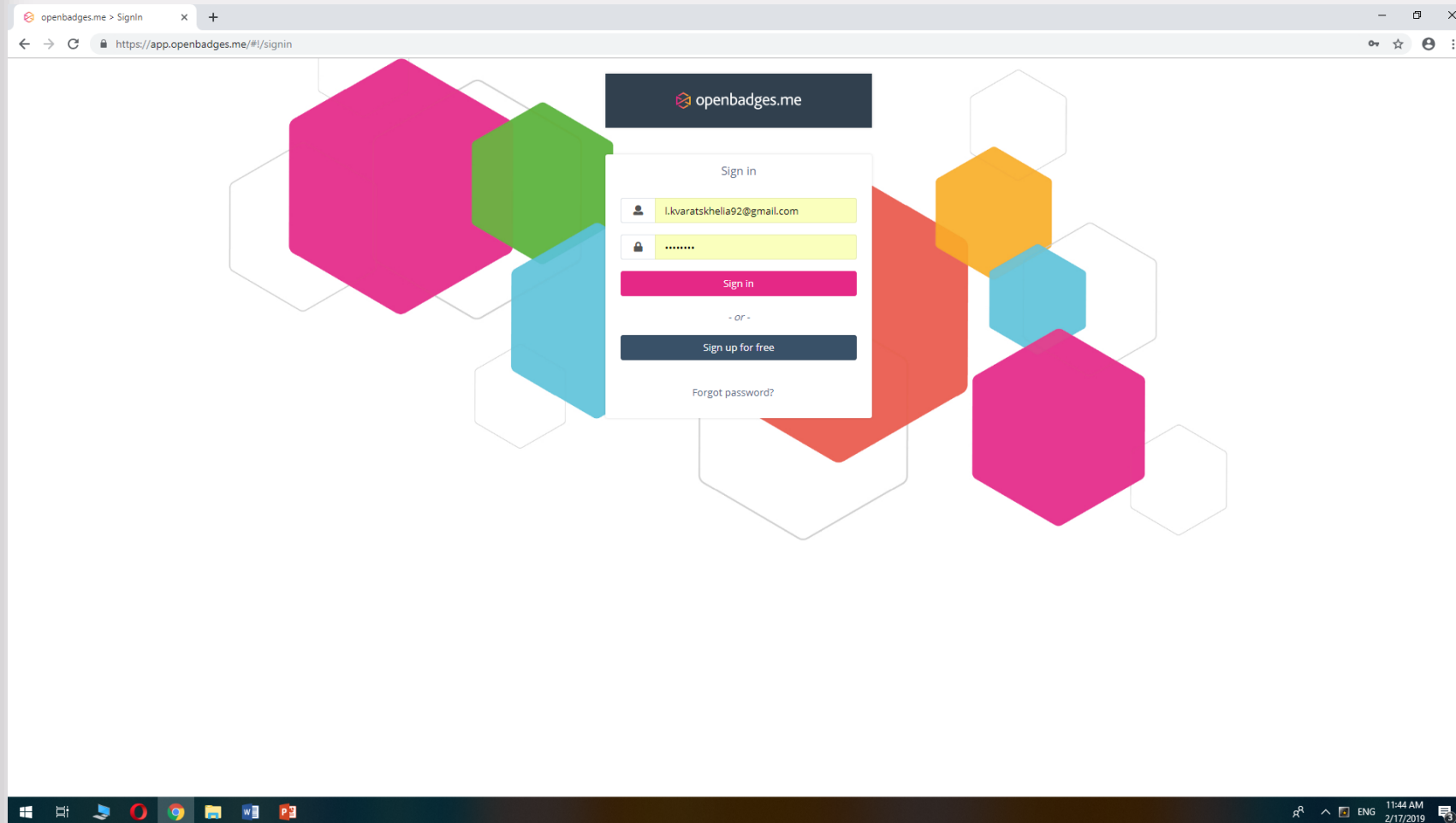


Case Study - SSU

Theoretical Part

Introduction

# Sokhumi State University – Case Study



Case Study - SSU

Theoretical Part

Introduction

# Sokhumi State University – Case Study

openbadges.me > overview

https://app.openbadges.me/#/overview

System Administrator

**Welcome**

You can think of an Open Badge as a digital certificate or award, rewarding, recognising or acknowledging achievements, skills or experiences. You can give your badges to people who attend a conference, an event, complete a challenge, demonstrate a skill or simply for being happy. In a nutshell, you can award badges for anything you value and want to give recognition of. Badges can motivate, excite and inspire. They make people smile.

Openbadges.me makes working with and using badges straight forward and understandable. You build and prepare your badges. You give out your badges. People collect, display and show off the badges you give to them.

Within your Openbadges.me space you can prepare your badges, building them, getting them ready to give out. As you prepare your badge, you add detail into it. This detail includes a description of what this badge represents, how it can be earned or awarded, and information about who is giving out the badge. Openbadges.me leads you through all this, step by step, with help and guidance always available on every screen. It's not as complicated as it sounds.

Once you have prepared a badge, you can start to give it out to people. Again, Openbadges.me guides you through this badge issuing process. The badges you send out not only contain the detail you added during the preparation of the badge, but also information about who the badge was given to and when they received it. Badges are very clever that way.

Each badge you give out from your Openbadges.me space meets the global Open Badge 2.0 standard. For people receiving these badges, this means they can store, organise and display their badges within a backpack, such as the Openbadges.me Backpack. Individual badges and badge collections can then be shared and displayed in personal, educational, vocational, professional or social settings.

We understand that you may want to make your Openbadges.me space feel familiar, personal, reflect your organisation look, feel and branding. To support you with this, within your Openbadges.me System Setting area there are tools for you to customise colour setting, introduce a logo and icon, build your own Openbadges.me landing page with a unique web address and custom design.

Get started, jump in and discover badging. We like to think everything is easy to use and understand within your Openbadges.me space. To make things easier, as you explore Openbadges.me, there will always be help and guidance close at hand, available through our help tool placed in the bottom right-hand corner of each screen. That said, if you do have any questions, need further guidance or would like to make suggestions on how we can improve your Openbadges.me badging experience, we would love to hear from you.

PS. Within the online Help (bottom right hand corner of each screen), type in and search for 'Getting started'. This will give you a more detailed, step by step guide on how to prepare and issue a badge.

**ADMIN**

- Overview
- Dashboard
- Organisations/Groups
- Preparing badges
- Issuing badges
- Reporting
- System settings

**LICENCE USAGE**

Issued badges: 2/1,000

Unique recipients: 0/200

**BACKPACK**

- Badges
- Collections

**Upgrade now**

**Help**



Case Study - SSU

Theoretical Part

Introduction

# Sokhumi State University – Case Study

The screenshot displays the 'openbadges.me' web application. The browser address bar shows 'https://app.openbadges.me/#/!/issuers'. The user is logged in as 'System Administrator'. The left sidebar shows the user profile 'Levan Kvaratskhelia' and a navigation menu with options like Overview, Dashboard, Organisations/Groups, Preparing badges, Badge issuers (highlighted), Graphics library, Managing badges, Issuing badges, Reporting, and System settings. The main content area is titled 'Issuers' and contains a table of badge issuers. The table has columns for Name, Description, Website, Organisation, and Actions. Two issuers are listed: 'Levan Kvaratskhelia' and 'Lia Akhaladze', both associated with Sokhumi State University. A '+ Create issuer' button is in the top right of the table. At the bottom right, there is a 'Help' button. The Windows taskbar at the bottom shows the date and time as 4:29 PM on 2/15/2019.

Name	Description	Website	Organisation	Actions
Levan Kvaratskhelia	Sokhumi State University, Faculty of Education, Subject: Multicultural Education - Multicultural and Multiethnic Georgia	http://www.sou.edu.ge/	Sokhumi State University	[Edit] [Delete]
Lia Akhaladze	Sokhumi State University, Faculty of Education, Subject: Multicultural Education: Multicultural and Multiethnic Georgia	http://www.sou.edu.ge	Sokhumi State University	[Edit] [Delete]



Case Study - SSU

Theoretical Part

Introduction

# Sokhumi State University – Case Study

The screenshot displays the openbadges.me dashboard for a user named Levan Kvaratskhelia. The interface shows a grid of 11 digital badges created for Sokhumi State University. The badges are categorized by type and creation date. The dashboard also includes a sidebar with navigation options like Overview, Dashboard, Organisations/Groups, Preparing badges, Badge issuers, Graphics library, Managing badges, Issuing badges, Reporting, and System settings. The bottom of the dashboard shows the user's license usage, including issued badges (2/1,000) and unique recipients (0/200). A 'Help' button is located in the bottom right corner.

Case Study - SSU

Theoretical Part

Introduction

# Sokhumi State University – Case Study



openbadges.me > Badges

https://app.openbadges.me/#/badges

System Administrator

Badges

Status: All issuers: All tags: Search... Sort: Created on

+ Create badge

**Midterm Exam Master Badge**  
A midterm exam is an exam given near the middle of an ac...

Issued: 5 times  
Created: 8 December, 2018  
Published 10 December, 2018  
Issuer: Lia Akhaladze

Withdraw Summary Copy

**Presentation Master Badge**  
Presentation skills are extremely useful both in and out...

Issued: 12 times  
Created: 11 December, 2018  
Published 12 December, 2018  
Issuer: Levan Kvaratskhelia

Withdraw Summary Copy

**Quiz master Badge**  
A quiz is a brief assessment used in education and simila...

Issued: 10 times  
Created: 2 November, 2018  
Published 4 November, 2018  
Issuer: Levan Kvaratskhelia

Withdraw Summary Copy

**Exam Master Badge**  
An examination is a test to show the knowledge and abilit...

Issued: 3 times  
Created: 13 January, 2019  
Published 19 January, 2019  
Issuer: Lia Akhaladze

Withdraw Summary Copy

**Subject Knowledge Badge**  
The term content knowledge refers to the body of knowledge...

Issued: 4 times  
Created: 2 November, 2018  
Published 6 November, 2018  
Issuer: Levan Kvaratskhelia

Withdraw Summary Copy

**Achievement in Learning Badge**  
Student achievement is a student doing well academically...

Issued: 5 times  
Created: 6 October, 2018  
Published 10 October, 2018  
Issuer: Lia Akhaladze

Withdraw Summary Copy

**Multicultural and Intercultural Georg...**  
Multicultural is something that incorporates ideas, belie...

Issued: 6 times  
Created: 2 November, 2018  
Published 24 September, 2018  
Issuer: Lia Akhaladze

Withdraw Summary Copy

**Empathy Bagde**  
The capacity to understand or feel what another person is...

Issued: 6 times  
Created: 22 September, 2018  
Published 24 September, 2018  
Issuer: Levan Kvaratskhelia

Withdraw Summary Copy

**Leadership Badge**  
An effective leader is a person who does the following: C...

Issued: 8 times  
Created: 6 October, 2018  
Published 10 October, 2018  
Issuer: Levan Kvaratskhelia

Withdraw Summary Copy

**Oral Communication Badge**  
the process of verbally transmitting information and ideas

Upgrade now

Help

ADMIN

- Overview
- Dashboard
- Organisations/Groups
- Preparing badges
  - Badge issuers
  - Graphics library
  - Managing badges
- Issuing badges
- Reporting
- System settings

LICENCE USAGE

Issued badges: 2/1,000

Unique recipients: 0/200

2:54 AM 2/17/2019



Case Study - SSU

Theoretical Part

Introduction



# Sokhumi State University – Case Study

Levan Kvaratskhelia  
lkvaratskhelia92@gmail.com

ADMIN

- Overview
- Dashboard
- Organisations/Groups
- Preparing badges
- Badge issuers
- Graphics library
- Managing badges
- Issuing badges
- Reporting
- System settings

LICENCE USAGE

Issued badges: 2/1,000

Unique recipients: 0/200

Upgrade now

Badges

Summary: 'Multicultural and Intercultural Georgia Badge'

Multicultural is something that incorporates ideas, beliefs or people from many different countries and cultural backgrounds. Interculturalism refers to support for cross-cultural dialogue and challenging self-segregation tendencies within cultures.

Badge criteria

1. Empathy; 2. Working on and development of diverse topics in multicultural education; 3. Communicability with every member of the group; 4. openness; 5. Collaboration; 6. High level of critical thinking.

Badge issuer

Lia Akhaladze  
Sokhumi State University. Faculty of Education. Subject: Multicultural Education: Multicultural and Multiethnic Georgia  
<http://www.sou.edu.ge>

Badge Attributes

Name	Value
Answer the Questions	6
Group work	4
Presentation	2
Workshop	1

BADGE ID  
OB-91559451-1cb6-425a-886f-8c0278dc7459

ISSUED  
1 times

LANGUAGE  
en-US

TAGS  
class MulticulturalGeorgia MultiethnicGeorgia students SokhumiStateUniversity Multiculturalism MulticulturalEducation Georgia University badge education interculturalism

Created: 20 January, 2019 Published: 31 January, 2019  
Issuer: Lia Akhaladze

Withdraw Summary Copy

Oral Communication Badge  
the process of verbally transmitting information and ideas

Help

Case Study - SSU

Theoretical Part

Introduction

# Sokhumi State University – Case Study

openbadges.me > Badges

https://app.openbadges.me/#/badges

ADMIN

- Overview
- Dashboard
- Organisations/Groups
- Preparing badges
  - Badge issuers
  - Graphics library
- Managing badges
- Issuing badges
- Reporting
- System settings

LICENCE USAGE

Issued badges: 2/1,000

Unique recipients: 10,250

Upgrade now

BACKPACK

- Badges
- Collections

**ORAL COMMUNICATION**

**BADGE ID**  
OB-b9b9e1a0-e462-468b-b9e1-8810472501e6

**ISSUED**  
13 times

**LANGUAGE**  
en-US

**TAGS**  
erasmus knowledge learning

**Summary: 'Oral Communication Badge'**

the process of verbally transmitting information and ideas from one individual or group to another. Oral communication can be either formal or informal.

**Badge criteria**

1. Communicative success (Appropriate topic, amount of time conversing; exchange well-connected)
2. Grammar (Very few errors; consistent control of the structures taught in class (communication rarely impeded))
3. Vocabulary (Shows control of a wide range of vocabulary taught and uses this vocabulary appropriately)
4. Fluency (Speech smooth; student comfortable and confident; no mispronunciation that would interfere with comprehension.)

**Badge issuer**

Lia Akhaladze  
Sokhumi State University. Faculty of Education. Subject: Multicultural Education: Multicultural and Multiethnic Georgia  
<http://www.sou.edu.ge>

**Badge Attributes**

Name	Value
Answers	5
Examples	3
Feedback	4
Presentation	1
Students critique each other	4
To deliver seminars	6

**MultiethnicGeorgia asset class badge University communication Georgia**

Withdraw Summary Copy

Help



Case Study - SSU

Theoretical Part

Introduction

# Sokhumi State University – Case Study

## Timeline of the Semester:



Empathy



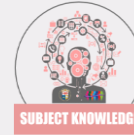
Oral  
Communication



Leadership



Achievement  
in Learning



Subject Knowledge



Multicultural &  
Intercultural Georgia



Quiz Master



Presentation Master



Midterm Exam  
Master



Exam Master



Case Study - SSU

Theoretical Part

Introduction

2

SEPTEMBER

2018



2

OCTOBER

2018



3

NOVEMBER

2018



2

DECEMBER

2018



1

JANUARY

2019



11 23 19 13 6

JANUARY/2019  
DECEMBER/2018  
NOVEMBER/2018  
OCTOBER/2018  
SEPTEMBER/2018



Case Study - SSU

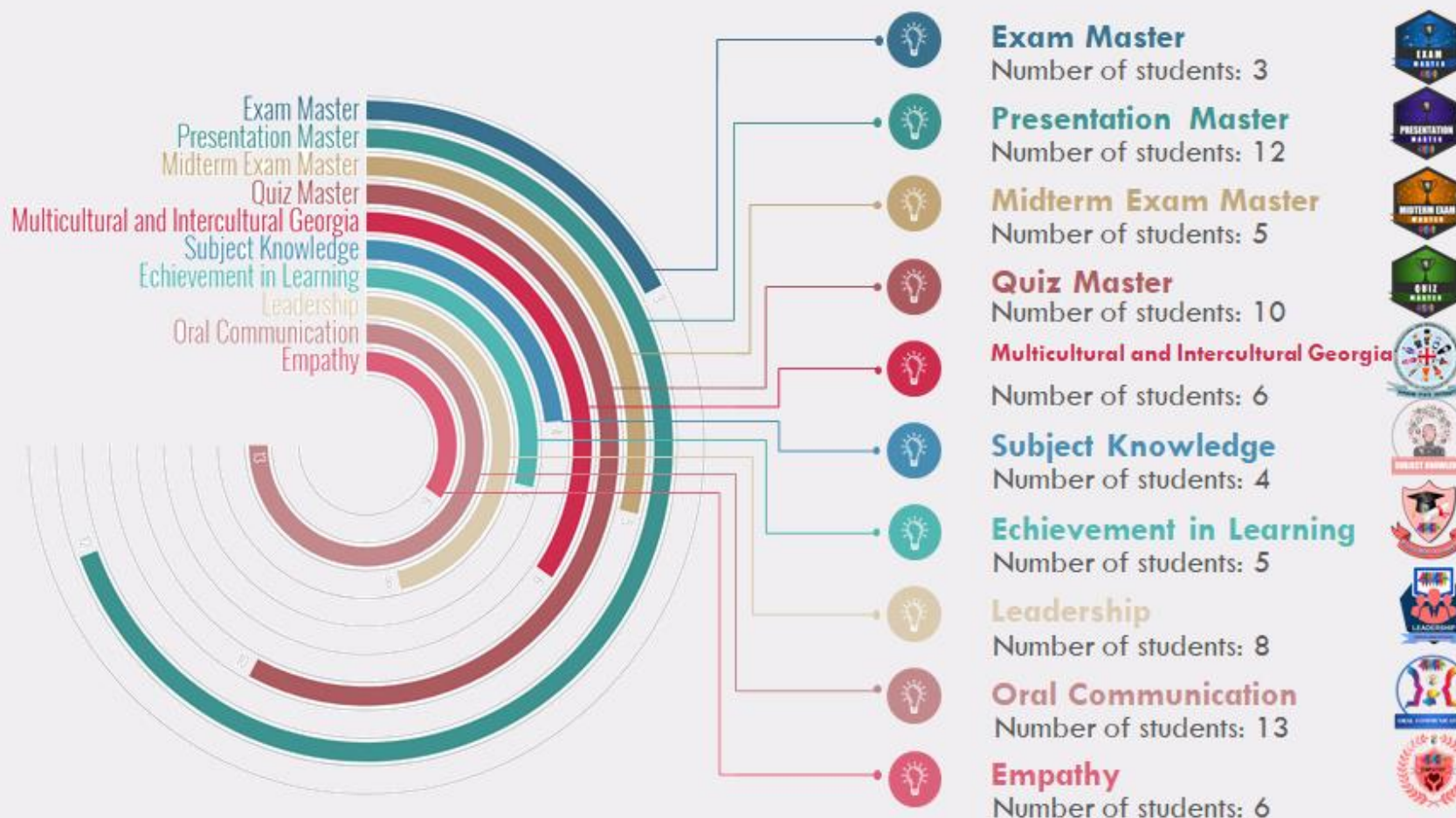
Theoretical Part

Introduction

# Sokhumi State University – Case Study

# Sokhumi State University – Case Study

## Badge Statistics:



Case Study - SSU

Theoretical Part

Introduction

Summary/Feedback

Group Presentations

Hands - on



# Sokhumi State University – Case Study

## 2-ND PILOT

Faculty – Education

Subject – Education Policy

Students number – 18

Time Interval – 04.03.2019 – 31.07.2019

- ❑ For the second pilot we took the 21st Century Skills Badging challenge. The aim was to design scalable, replicable and transparent methods to create rigorous, competency-based badges that demonstrate students' 21st century skills. Also we started using Multiple level badges for the first time: Gold, Silver and Bronze Badges.
- ❑ Reading material for this subject was created in the framework of the Tempus project “DOIT”.



Case Study - SSU

Theoretical Part

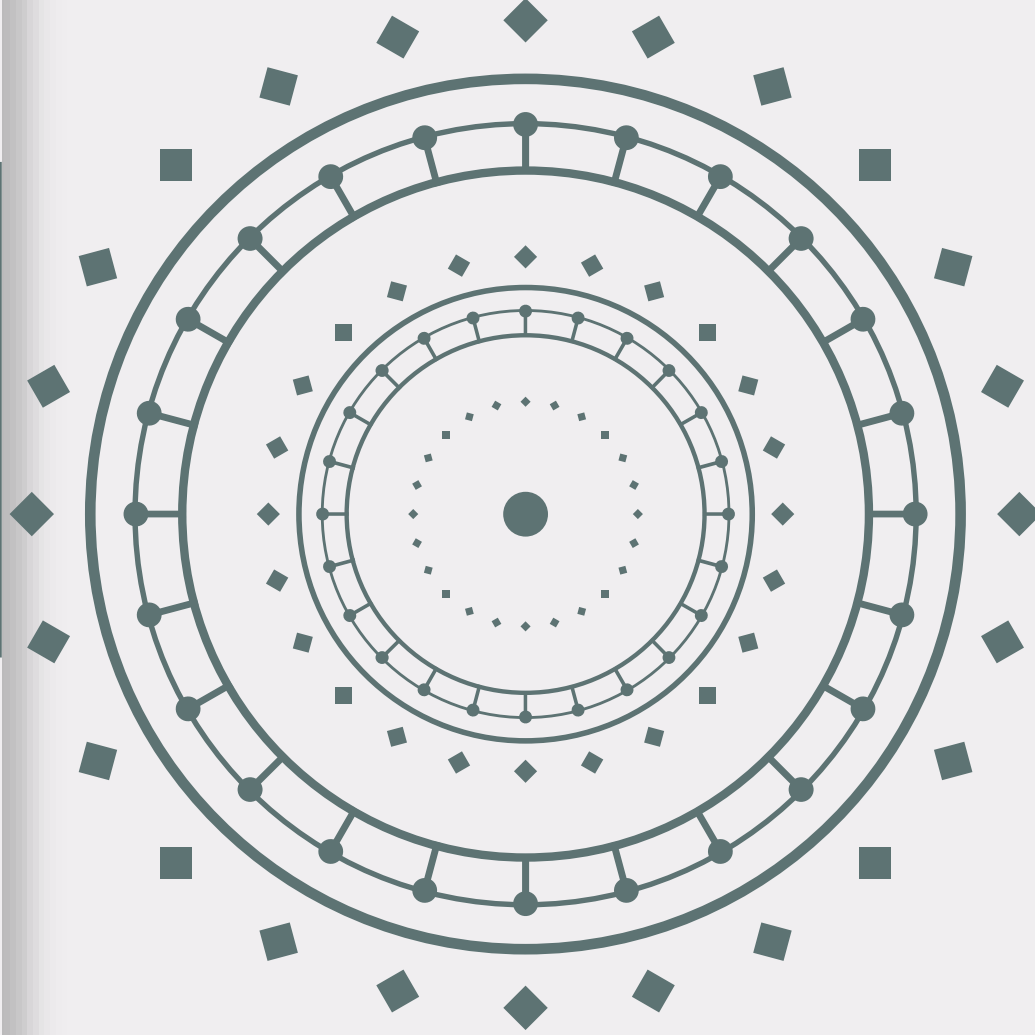
Introduction



Summary/Feedback

Group Presentations

Hands - on



# Sokhumi State University – Case Study

BRAINSTORMING



Case Study - SSU

Theoretical Part

Introduction

# Sokhumi State University – Case Study

## 21<sup>st</sup> Century Skills Categories

21st Century skills are abilities that today's students need to succeed in their careers during the Information Age. These skills are intended to help students keep up with the lightning-pace of today's modern markets. Each skill is unique in how it helps students, but they all have one quality in common.

**They're essential in the age of the Internet.**



### Learning Skills

Teaches students about the mental processes required to adapt and improve upon a modern work environment.

**LEARNING  
SKILLS**



### Literacy Skills

Focuses on how students can discern facts, publishing outlets, and the technology behind them.

**LIFE  
SKILLS**



### Life Skills

Take a look at intangible elements of a student's everyday life. These intangibles focus on both personal and professional qualities.

**LITERACY  
SKILLS**



### Other Badges

Master (4 badges) and Multiple Level Badges (3 badges: Gold; Silver; Bronze).

**OTHER  
BADGES**



**Case Study - SSU**

**Theoretical Part**

**Introduction**

**Hands - on**

**Group Presentations**

**Summary/Feedback**

# Sokhumi State University – Case Study

## 21<sup>st</sup> Century Skills Categories

21st Century skills are abilities that today's students need to succeed in their careers during the Information Age. These skills are intended to help students keep up with the lightning-pace of today's modern markets. Each skill is unique in how it helps students, but they all have one quality in common.

**They're essential in the age of the Internet.**



### Learning Skills

Teaches students about the mental processes required to adapt and improve upon a modern work environment.

**LEARNING  
SKILLS**



### Literacy Skills

Focuses on how students can discern facts, publishing outlets, and the technology behind them.

**LIFE  
SKILLS**



### Life Skills

Take a look at intangible elements of a student's everyday life. These intangibles focus on both personal and professional qualities.

**LITERACY  
SKILLS**

**OTHER  
BADGES**



### Other Badges

Master (4 badges) and Multiple Level Badges (3 badges: Gold; Silver; Bronze).



**Case Study - SSU**

**Theoretical Part**

**Introduction**

**Summary/Feedback**

**Group Presentations**

**Hands - on**

# Sokhumi State University – Case Study

## Category 1. Learning Skills (the four C's)



Case Study - SSU

Theoretical Part

Introduction

# Sokhumi State University – Case Study

## Category 2. Literacy Skills (foundational literacies)



Case Study - SSU

Theoretical Part

Introduction

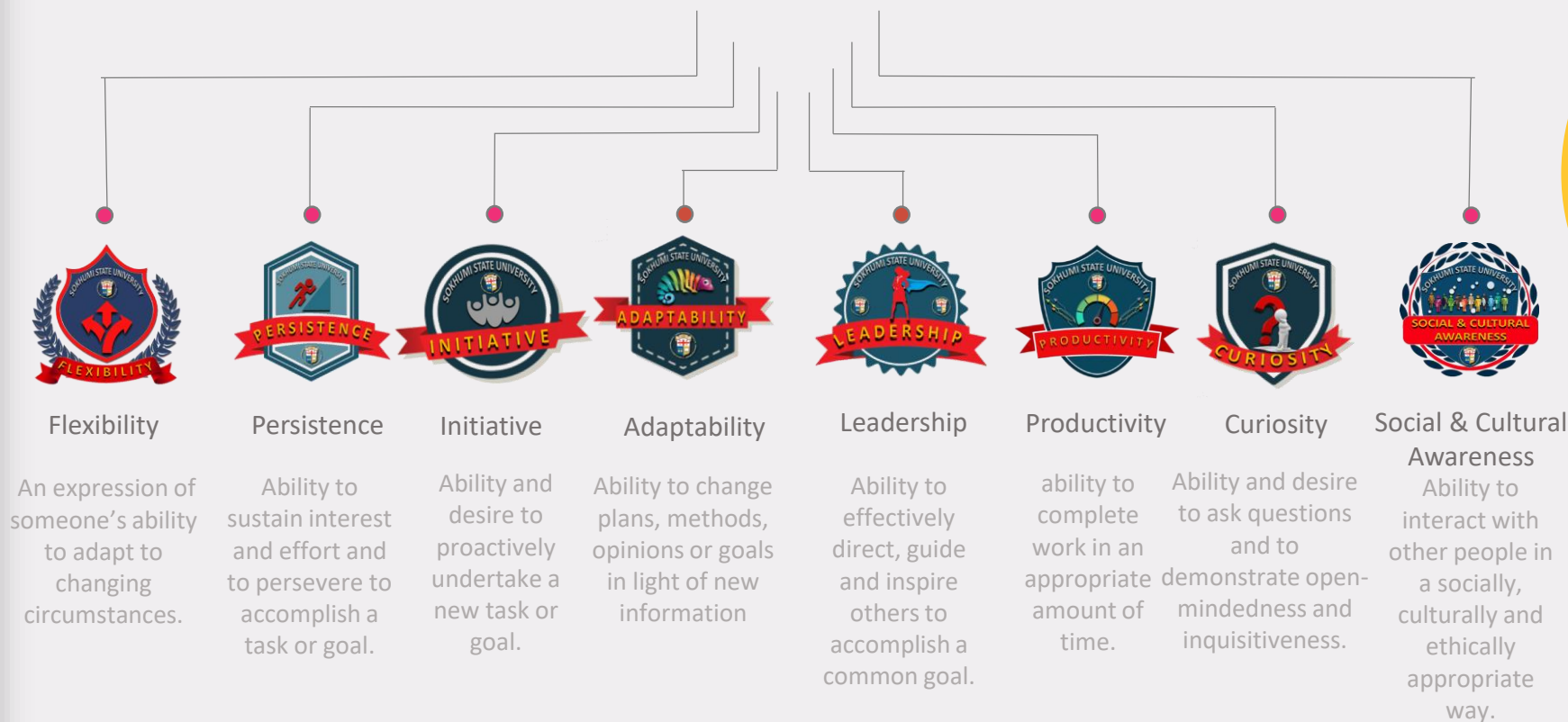
Summary/Feedback

Group Presentations

Hands - on

# Sokhumi State University – Case Study

## Category 3. Life Skills (character qualities)



Case Study - SSU

Theoretical Part

Introduction

Summary/Feedback

Group Presentations

Hands - on



# Sokhumi State University – Case Study

## Category 4. Master Badges



### Quiz Master Badge

If student gets excellent – maximum score after completion of the quiz, he/she earns Quiz Master Badge.



### Midterm Exam Master Badge

If student gets excellent - a prominent and especially broad level of achievement of learning outcomes (at least 28-30 points) after completion of the midterm exam, he/she earns Midterm Exam Master Badge.



### Presentation Master Badge

If student gets excellent – at least 9-10 points after completion of the presentation, he/she earns Presentation Master Badge.



### Final Exam Master Badge

If student gets excellent - a prominent and especially broad level of achievement of learning outcomes (at least 38-40 points) after completion of the final exam, he/she earns Final Exam Master Badge.



Case Study - SSU

Theoretical Part

Introduction

Summary/Feedback

Group Presentations

Hands - on

# Sokhumi State University – Case Study

## Category 4. Multiple Level Badges



Gold Badge

If student gets A (excellent) - a prominent and especially broad level of achievement of learning outcomes (at least 91 points) after completion of the subject, he/she earns Gold Badge.



Silver Badge

If student gets B (very good) - achievement of very good level of learning outcomes (at least 81-90 points) after completion of the subject, he/she earns Silver Badge.



Bronze Badge

If student gets C (good) - achievement of good level of learning outcomes (at least 71-80 points) after completion of the subject, he/she earns Bronze Badge.



Case Study - SSU

Theoretical Part

Introduction

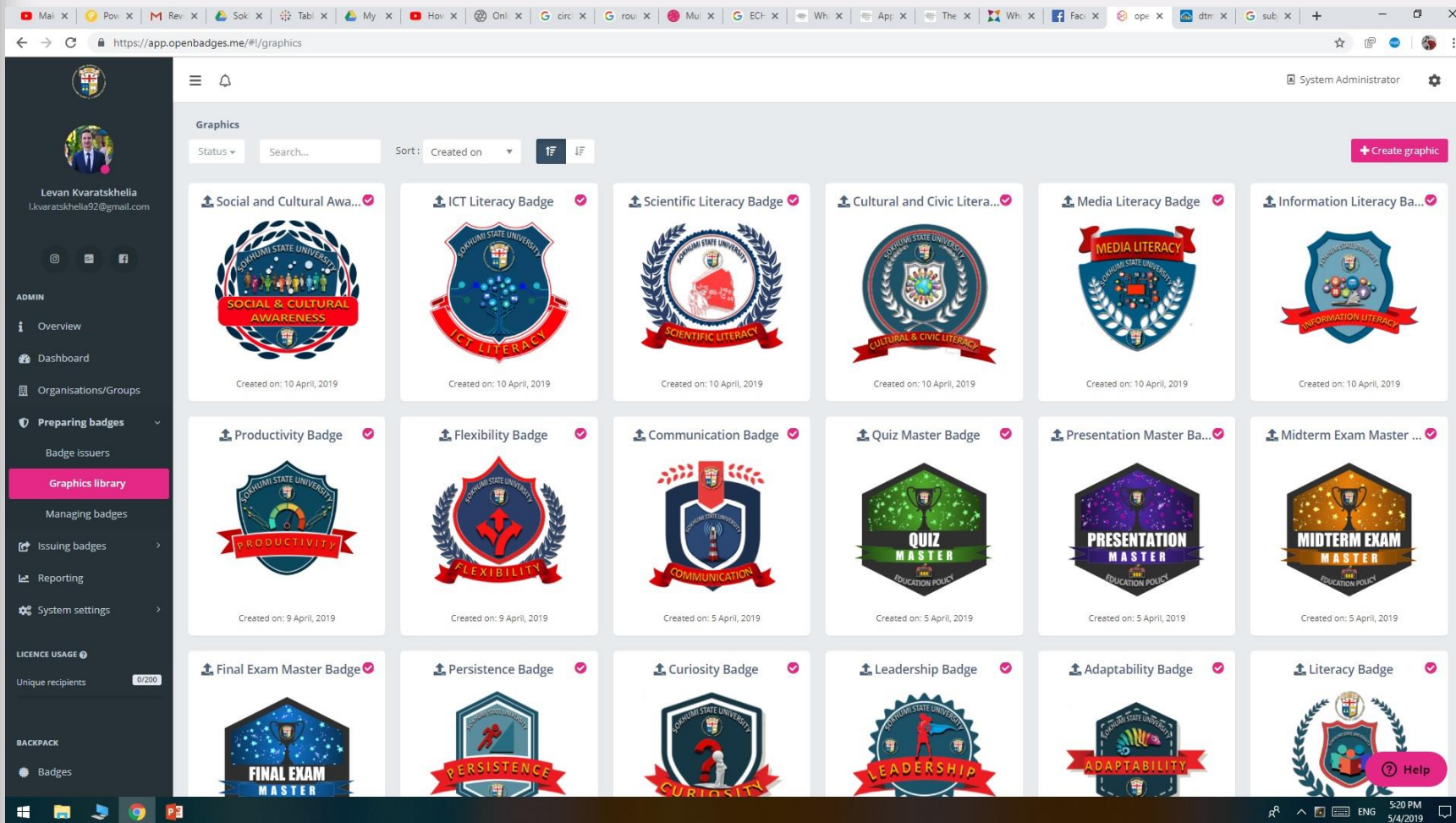
Summary/Feedback

Group Presentations

Hands - on

# Sokhumi State University – Case Study

## Open Digital Badges of Sokhumi State University:



Graphics

Status: Search... Sort: Created on 17 17

+ Create graphic

Levan Kvaratskhelia  
lkvaratskhelia92@gmail.com

ADMIN

- Overview
- Dashboard
- Organisations/Groups
- Preparing badges
  - Badge issuers
  - Graphics library
  - Managing badges
- Issuing badges
- Reporting
- System settings

LICENCE USAGE

Unique recipients 0/200

BACKPACK

- Badges

5:20 PM  
5/4/2019

Case Study - SSU

Theoretical Part

Introduction

Summary/Feedback

Group Presentations

Hands-on

# Creating a Badge with Google Drawings

<https://www.youtube.com/watch?v=GBYNHFwFXMc>



Hands - on

Case Study - SSU

Theoretical Part

Introduction

# GROUPS

I  
GROUP

**Badge Name**

Add Some Brief Text Here  
to Explain

II  
GROUP

**Badge Name**

Add Some Brief Text Here  
to Explain

III  
GROUP

**Badge Name**

Add Some Brief Text Here  
to Explain

IV  
GROUP

**Badge Name**

Add Some Brief Text Here  
to Explain



Group Presentations

Hands - on

Case Study - SSU

Theoretical Part

Introduction

# EVALUATION e-FORM

<https://urlzs.com/ZXye>



Summary/Feedback

Group Presentations

Hands - on

Case Study - SSU

Theoretical Part

Introduction



**“YOU DON’T HAVE TO BE GREAT TO START,  
BUT YOU HAVE TO START TO BE GREAT.”**



**THANK YOU**